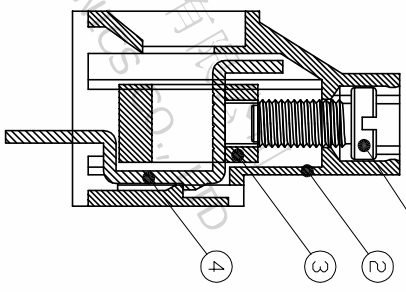
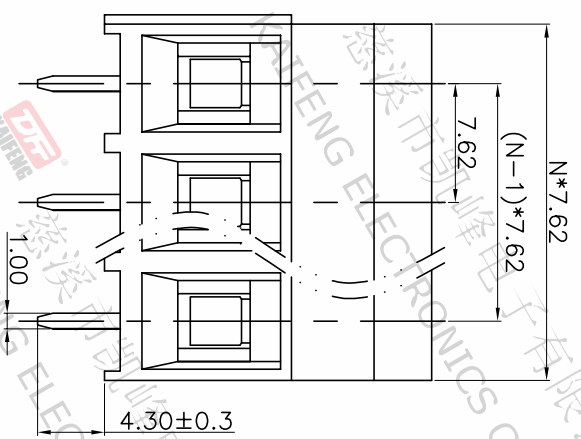
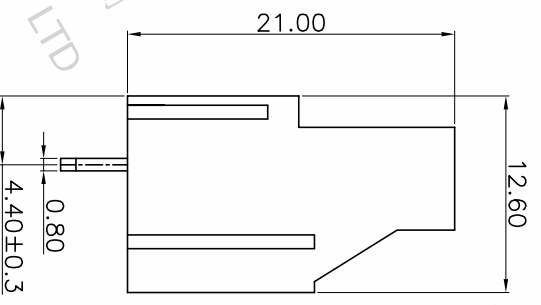
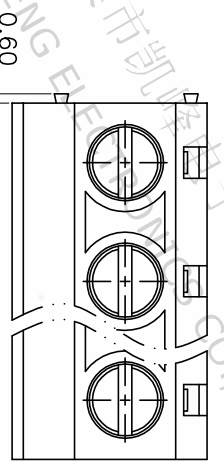


REV.	DESCRIPTION	DATE	DRAFTER	APPROVER
A1	DWG.REL	2020.05.22	DENG	JIN

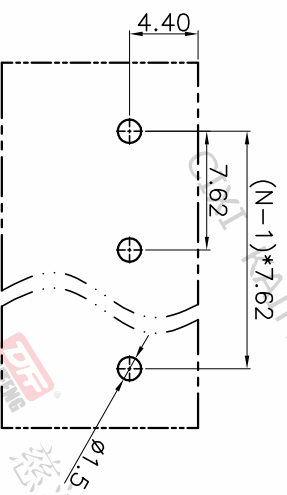
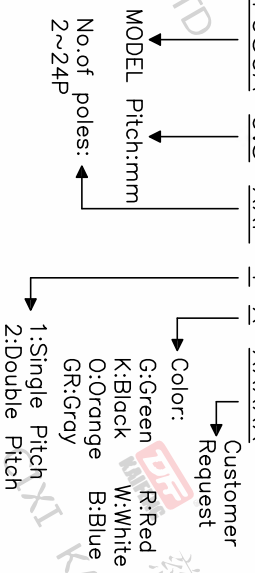


- Material  
 ○Screws : M3.0 steel, Zinc plated,  
 \* slot type  
 ○Housing : PA66, UL94V-0  
 ○Clamp : Copper alloy, Ni plated  
 ○Pin header : Copper alloy, Tin plated

- Electrical  
 UL IEC  
 Rated voltage : 300V 750V  
 Rated current : 30A 41A  
 Contact Resistance: 20mΩ  
 Insulation resistance: 500MΩ/DC500V  
 Withstanding Voltage : AC3000V/1min  
 Wire range: 26-10AWG 6.0mm<sup>2</sup>

- Mechanical  
 Operating temperature: -40°C ~ +105°C  
 Soldering temperature: 250°C ±5 / 5sec  
 Torque: 0.5N.m (4.43Lb.in)  
 Strip length: 6-7mm

• RoHS compliance  
 HOW TO ORDER  
 KF950A-9.5-XXP-1 X-XXXXX



P.C.B.LAYOUT

Pitch range	Nominal dimension range	PROJECTION	UNIT
>0	>0	0.1/10	mm
~6	>10		
~10	~24		
~24	~30		
~30	~60		
~60	~100		
~100	~150		
~150	>150		
±0.15	±0.20	±0.30	±0.50
±0.30	±0.50	±0.70	±1.00
±1.00	±1.30	±2*	

**DFE** 慈溪市凯峰电子有限公司  
 CIXI KAIFENG ELECTRONICS CO.,LTD

**DFE** 慈溪市凯峰电子有限公司  
 CIXI KAIFENG ELECTRONICS CO.,LTD

DRAWING NO. W15000832

SCALE 1:1 SHEET 1 OF 1

DRAWING TYPE CUSTOMER DRAWING

TITLE KF950A-7.62-XXP-1X

SHEET SIZE A4 SERIES KF950A

