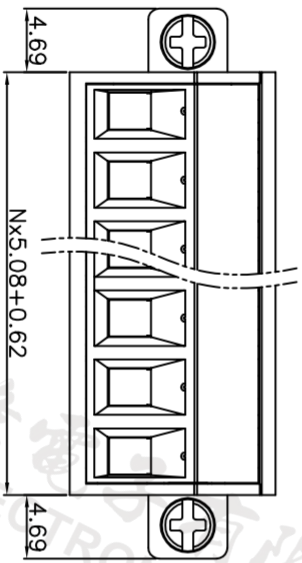
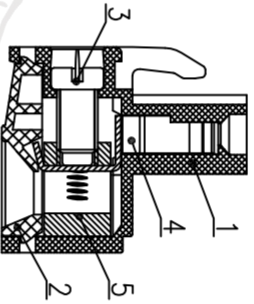
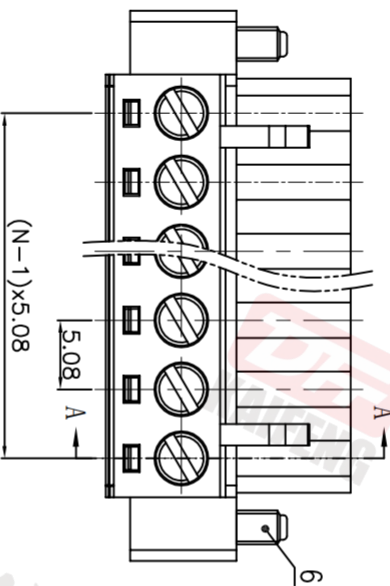
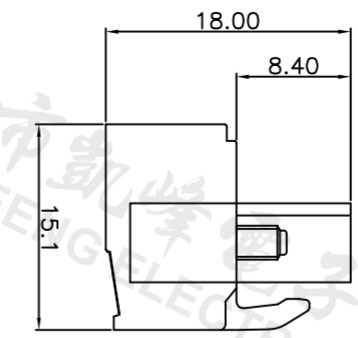
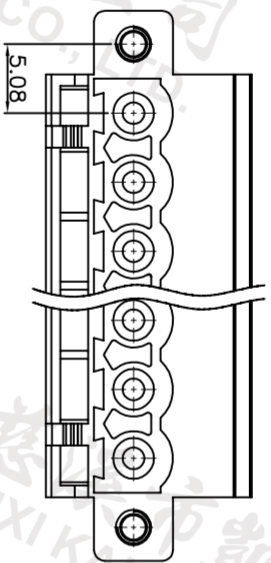
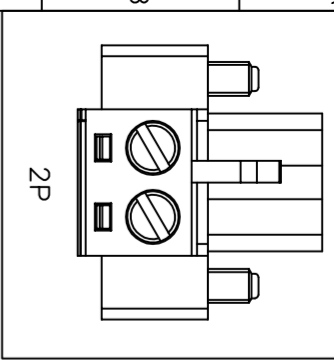


REV.	DESCRIPTION	DATE	DRAFTER	APPROVER
V1.0	DWG.REL	2023.7.15	ZHANG	JIN



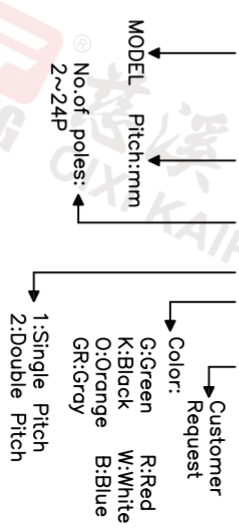
- Material
 - ØHousing : PA66, UL94V-0
 - ØCover : PA66, UL94V-0
 - ØScrew 1:M3.0 steel,Zinc plated,“-”slot type
 - ØContact : Copper alloy,Tin plated
 - ØClamp : Copper alloy, Ni plated
 - ØScrew 2:M2.5 steel,Zinc plated,“+/-”slot type

- Electrical

UL	IEC
Rated voltage : 300V	320V
Rated current : 15A	20A
Contact resistance : 20mΩ(Max)	
Insulation resistance: 500MΩ/DC500V	
Withstanding Voltage : AC2500V/1min	
Wire range: 28-12AWG	2.5mm ²

- Mechanical
 - Operating temperature: -40°C~+105°C
 - Soldering temperature:250°C±5/5sec
 - Torque: 0.5N.m (4.43Lb.in)
 - Strip length: 7-8mm
- Conform to REACH and RoHS

HOW TO ORDER
KF2EDGM-X-5.08-XXP-1 X-XXXX



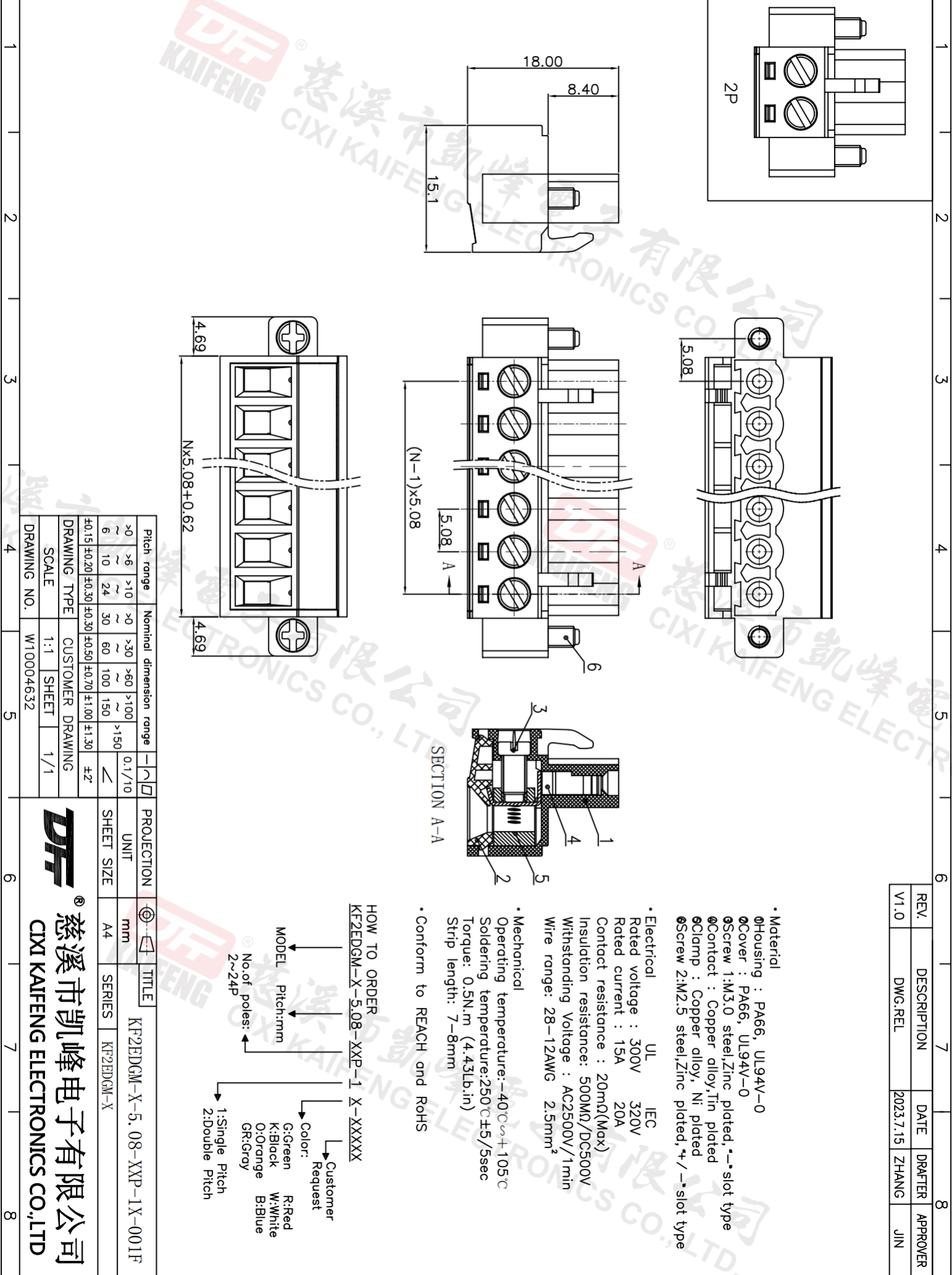
Pitch range	Nominal dimension range	PROJECTION	TITLE
>0	>6	>10	>0
~	~	~	~
6	10	24	30
±0.15	±0.20	±0.30	±0.30
			±0.50
			±0.70
			±1.00
			±1.30
			±2*

DRAWING TYPE	CUSTOMER DRAWING	SHEET SIZE	TITLE
SCALE	1:1	SHEET	1/1
DRAWING NO.	W10004632		
			KF2EDGM-X

DF 慈溪市凯峰电子有限公司
CIXI KAIFENG ELECTRONICS CO.,LTD

A 1 2 3 4 5 6 7 8

H G F E D C B



H G F E D C B A