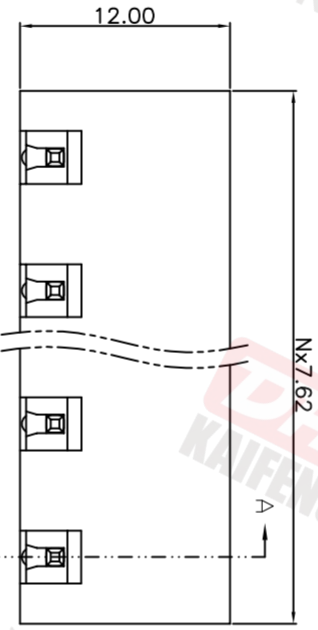
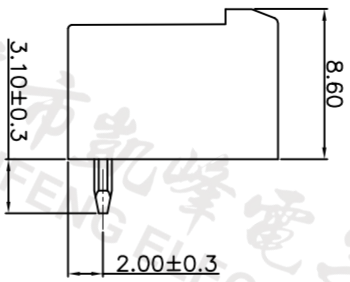
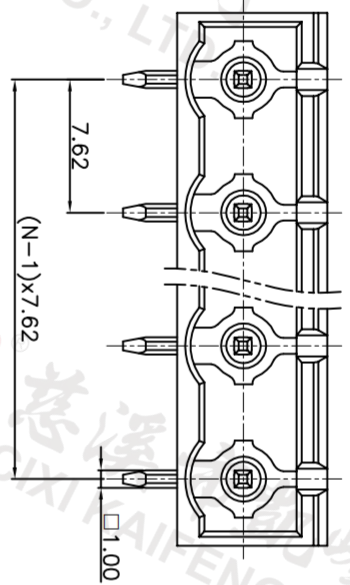
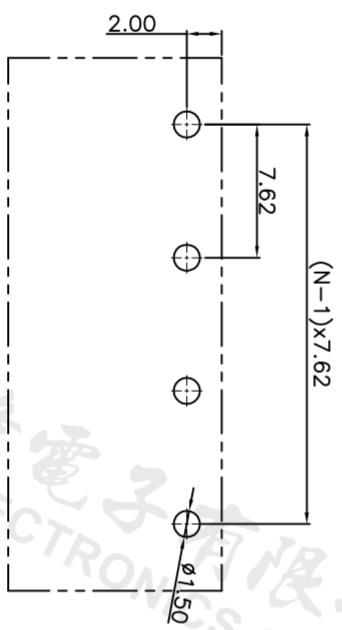
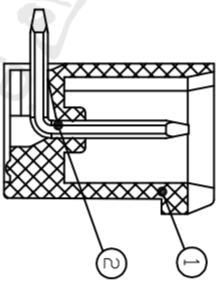


REV.	DESCRIPTION	DATE	DRAFTER	APPROVER
V1.0	DWG.REL	2023.7.25	ZHANG	JIN



SECTION A-A



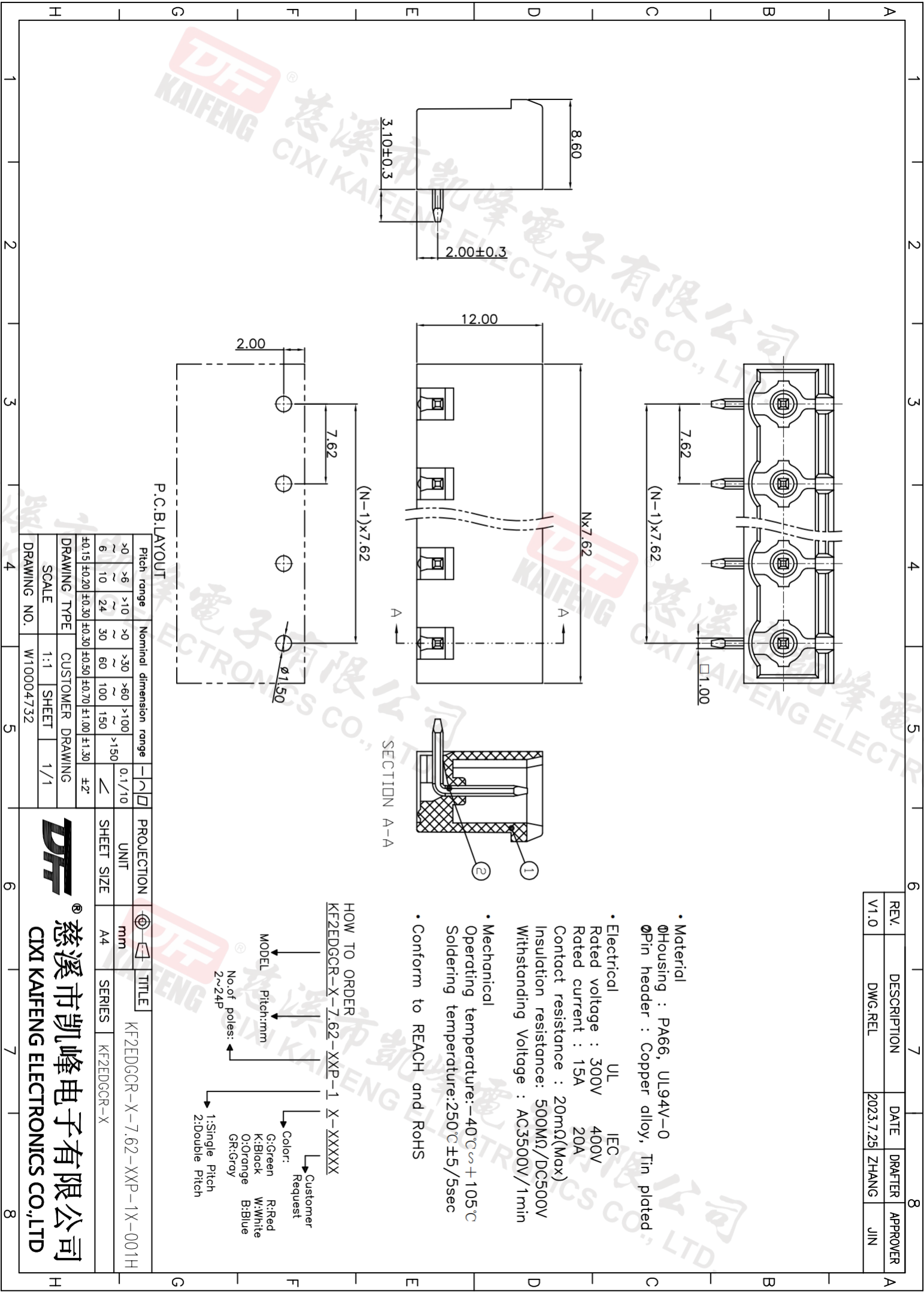
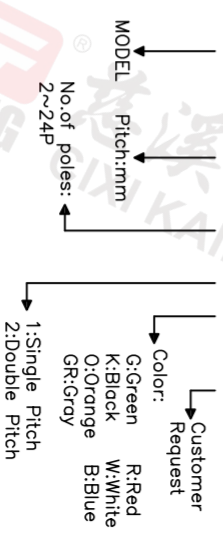
P.C.B.LAYOUT

Pitch range	Nominal dimension range	PROJECTION
>0	>6	0.1/10
>6	>10	□
6	10	□
10	24	□
±0.15	±0.20	□
±0.30	±0.30	□
±0.50	±0.50	□
±0.70	±1.00	□
±1.30	±1.30	□
		±2°

DRAWING TYPE	CUSTOMER DRAWING	SHEET SIZE	A4	TITLE	KF2EDGCR-X-7.62-XXP-1X-001H
SCALE	1:1	SHEET	4/4	SERIES	KF2EDGCR-X
DRAWING NO.	W10004732				

- Material
 ØHousing : PA66, UL94V-0
 ØPin header : Copper alloy, Tin plated
- Electrical
 UL IEC
 Rated voltage : 300V 400V
 Rated current : 15A 20A
 Contact resistance : 20mΩ(Max)
 Insulation resistance: 500MΩ/DC500V
 Withstanding Voltage : AC3500V/1min
- Mechanical
 Operating temperature: -40°C~+105°C
 Soldering temperature: 250°C±5/5sec
- Conform to REACH and RoHS

HOW TO ORDER
 KF2EDGCR-X-7.62-XXP-1 X-XXXXX



慈溪市凯峰电子有限公司
 CIXI KAIFENG ELECTRONICS CO., LTD

DFE
 慈溪市凯峰电子有限公司
 CIXI KAIFENG ELECTRONICS CO.,LTD