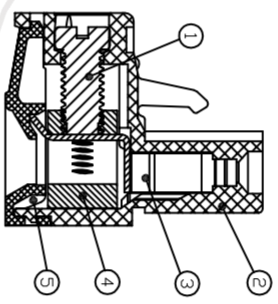
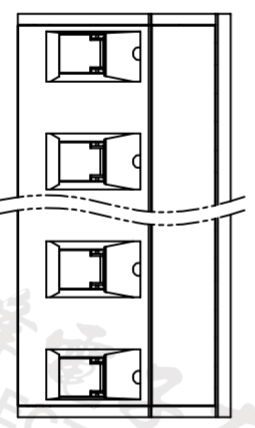
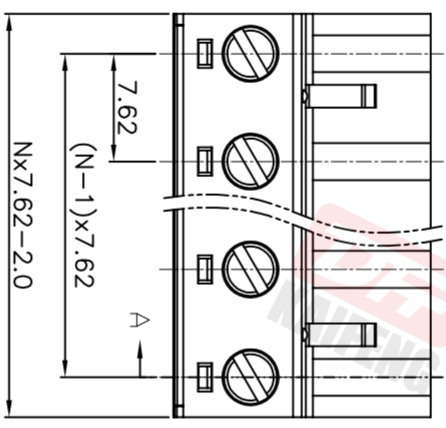
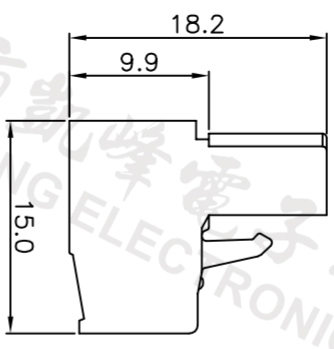
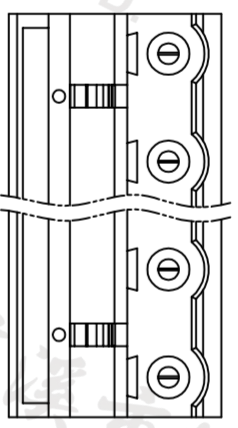
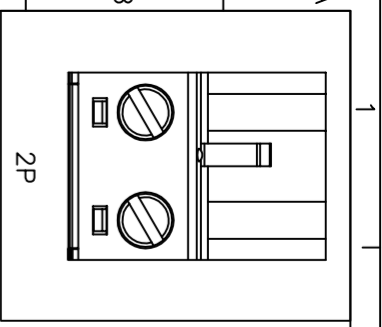


REV.	DESCRIPTION	DATE	DRAFTER	APPROVER
V1.0	DWG.REL	2023.7.25	ZHANG	JIN



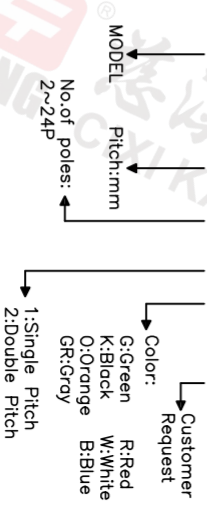
SECTION A-A

• Material  
 ØScrew: M3.0 steel, Zinc plated, \*- slot type  
 ØHousing : PA66, UL94V-0  
 ØContact : Copper alloy,Tin plated  
 ØClamp : Copper alloy, Ni plated  
 ØCover : PA66, UL94V-0

• Electrical  
 UL IEC  
 Rated voltage : 300V 400V  
 Rated current : 15A 20A  
 Contact resistance : 20mΩ(Max)  
 Insulation resistance : 500MΩ/DC500V  
 Withstanding Voltage : AC3500V/1min  
 Wire range : 28-12AWG;0.2-2.5mm<sup>2</sup>

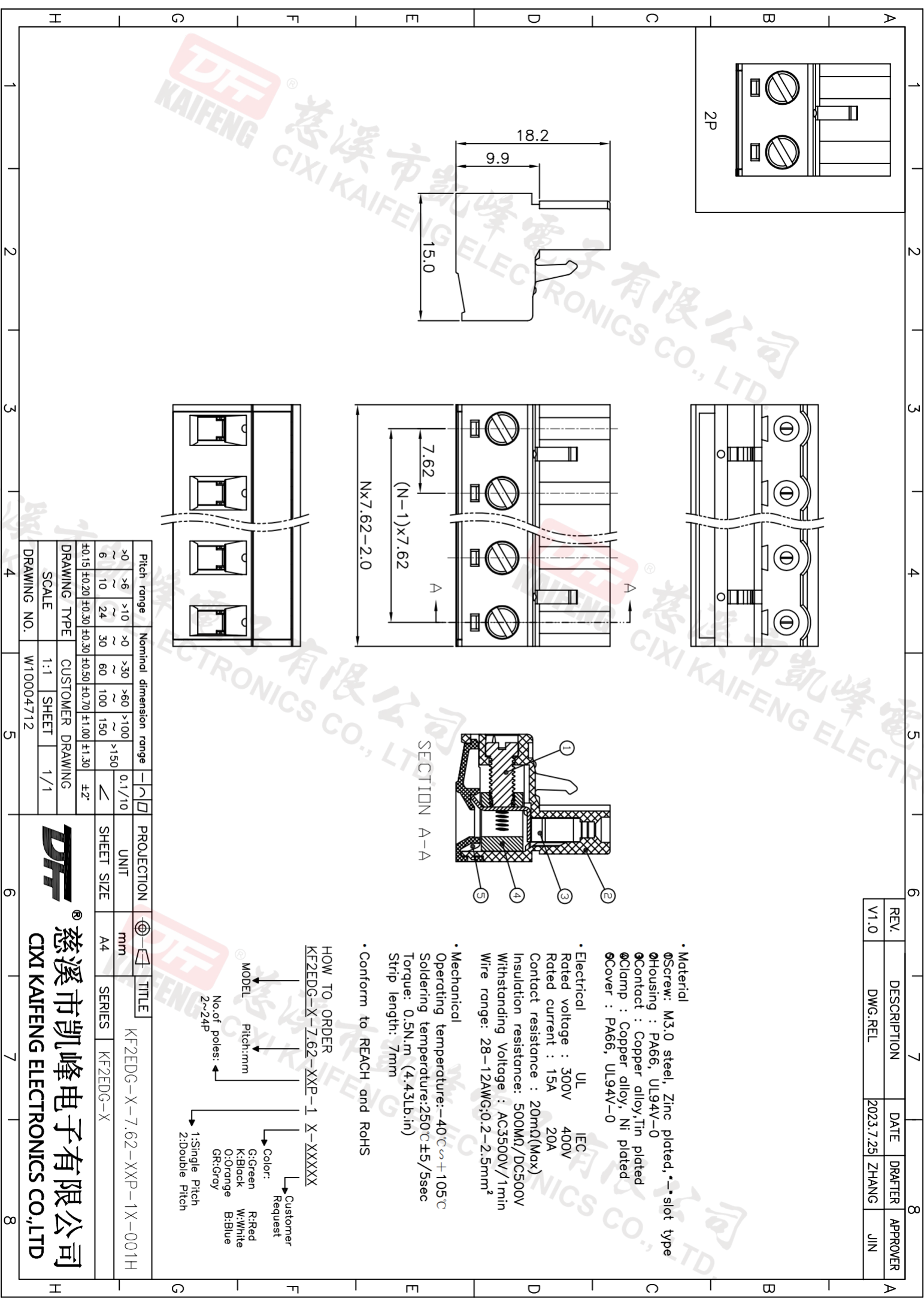
• Mechanical  
 Operating temperature:-40℃~+105℃  
 Soldering temperature:250℃±5/5sec  
 Torque: 0.5N.m (4.43Lb.in)  
 Strip length: 7mm  
 • Conform to REACH and RoHS

HOW TO ORDER  
 KF2EDG-X-7.62-XXP-1 X-XXXXX



Pitch range	Nominal dimension range	PROJECTION
>0	>0	0.1/10
>6	>30	□
~	~	□
6	30	□
10	60	□
24	100	□
±0.15	±0.30	□
±0.20	±0.50	□
±0.30	±0.70	□
±1.00	±1.30	□
±2*	±2*	□

DRAWING TYPE	CUSTOMER DRAWING	SCALE	SHEET	DRAWING NO.	TITLE
SCALE	1:1	SHEET	1/1	W10004712	KF2EDG-X-7.62-XXP-1X-001H
DRAWING NO.	W10004712	SHEET	1/1		



**DFE** 慈溪市凯峰电子有限公司  
 CIXI KAIFENG ELECTRONICS CO.,LTD