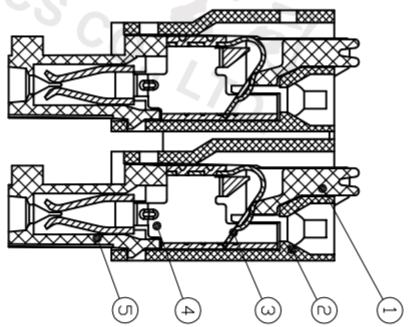
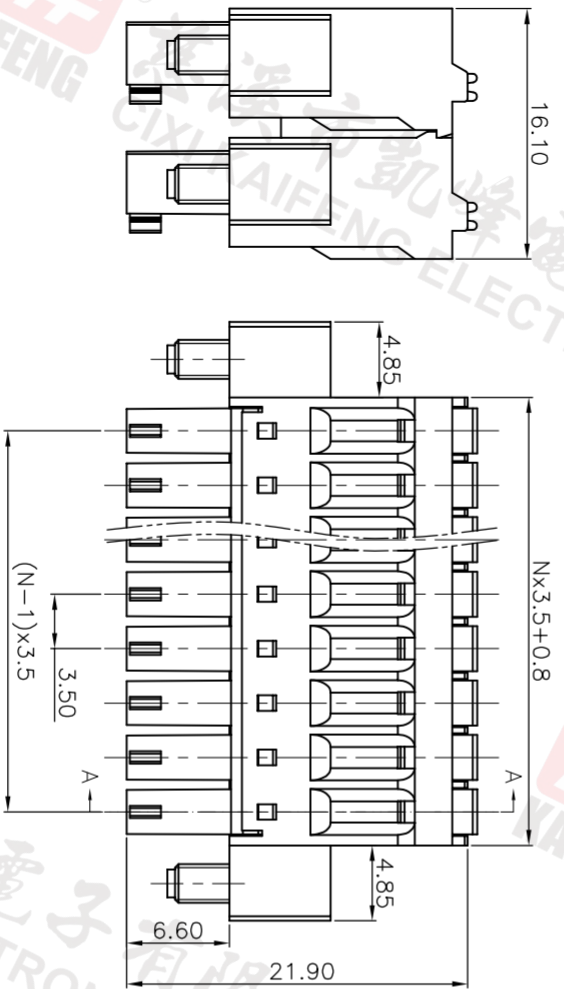
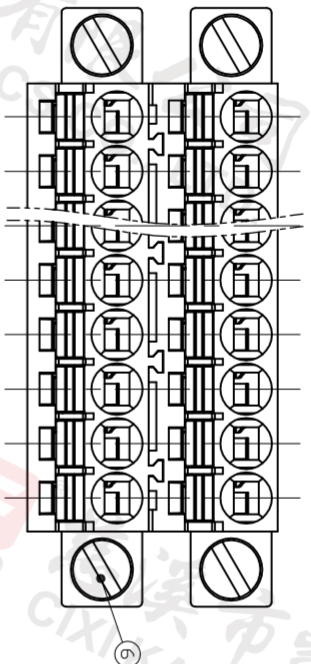


REV.	DESCRIPTION	DATE	DRAFTER	APPROVER
V1.0	DWG.REL	2022.10.26	ZHANG	JIN



SECTION A-A

- Material
  - ①Button : POM
  - ②Housing : PA66, UL94V-0
  - ③Reed : Stainless steel
  - ④Contact : Copper alloy, Tin plated
  - ⑤Cover : PA66, UL94V-0
  - ⑥Screw : M2.5 steel, Zinc plated

- Electrical
  - UL IEC
  - Rated voltage : 300V 250V
  - Rated current : 8A 7A
  - Contact resistance : 20mΩ(Max)
  - Insulation resistance: 500MΩ/DC500V
  - Withstanding Voltage : AC1500V/1min
  - Wire range: 24-16AWG;0.5-1.5mm<sup>2</sup>

- Mechanical
  - Operating temperature: -40℃~+105℃
  - Soldering temperature: 250℃±5/5sec
  - Strip length: 8-9mm

• Conform to REACH and RoHS

HOW TO ORDER  
 KF12EKNM-3.5-2\*XXP-1 X-XXXXX

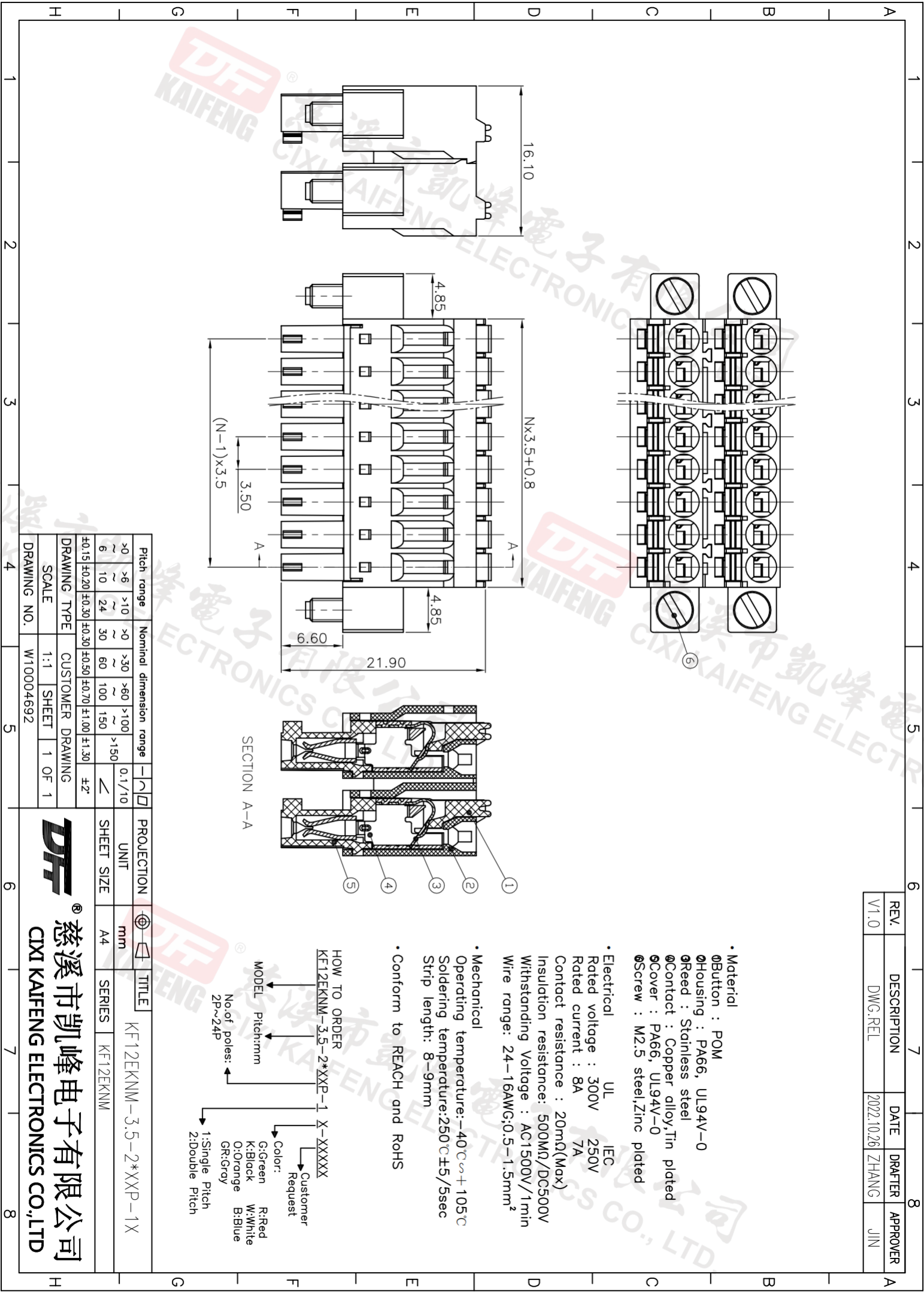
MODEL Pitch:mm  
 No. of poles: 2P~24P

Color: Request  
 G:Green R:Red  
 K:Black W:White  
 O:Orange B:Blue  
 GR:Gray

1:Single Pitch  
 2:Double Pitch

Pitch range	Nominal dimension range	PROJECTION
>0 ~>6	>0 ~>10	0.1/10
6 ~10	~24	∠
±0.15 ±0.20	±0.30 ±0.30 ±0.50 ±0.70 ±1.00 ±1.30	±2°

DRAWING TYPE	CUSTOMER DRAWING	SHEET SIZE	TITLE
SCALE	1:1	A4	KF12EKNM-3.5-2*XXP-1X
DRAWING NO.	W10004692	SHEET 1 OF 1	SERIES KF12EKNM



**DFE** 慈溪市凯峰电子有限公司  
 CIXI KAIFENG ELECTRONICS CO.,LTD