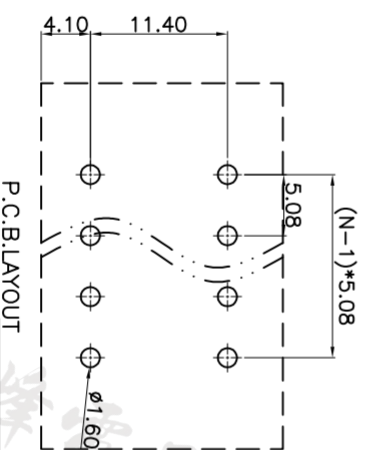
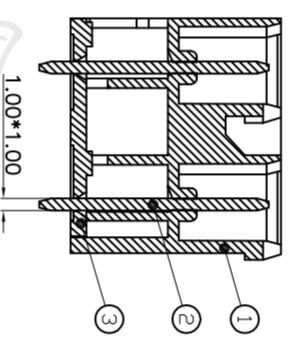
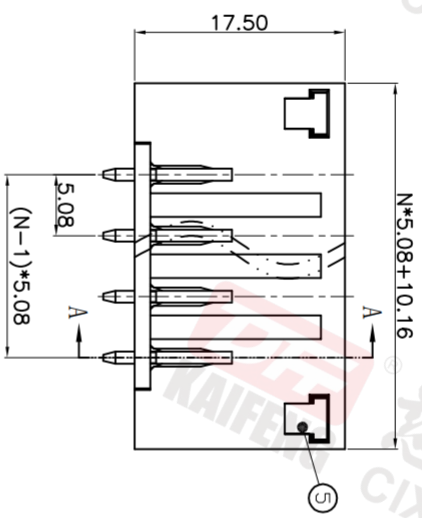
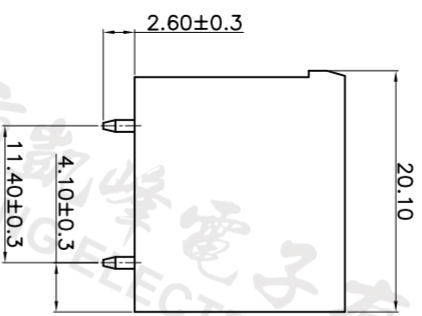
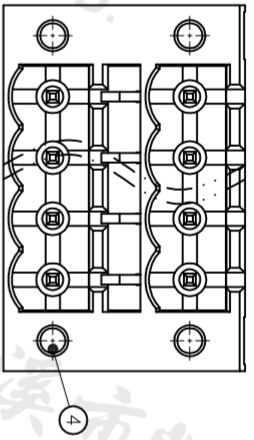


REV.	DESCRIPTION	DATE	DRAFTER	APPROVER
V1.0	DWG.REL	2021.8.21	ZHANG	JIN



Pitch range	Nominal dimension range	PROJECTION
>0	>0	0.1/10
>6	>30	□
~	~	□
6	30	□
10	60	□
~	~	□
24	100	□
±0.15	±0.30	□
±0.20	±0.50	□
±0.30	±0.70	□
±1.00	±1.30	□
±2*	±2*	□

DRAWING TYPE	CUSTOMER DRAWING	SCALE	SHEET	DRAWING NO.
1:1	1/1	1:1	1/1	W10003002

MODEL	TITLE	UNIT	SHEET SIZE	SERIES
2KF012VM-5.08-2*XXP-1	2KF012VM-5.08-2*XXP-1X	mm	A4	2KF012VM

HOW TO ORDER
 2KF012VM-5.08-2*XXP-1 X-XXXX

MODEL: Pitch:mm
 No.of poles: 2~24P

Color: Customer Request
 G:Green K:Black O:Orange GR:Gray
 R:Red W:White B:Blue

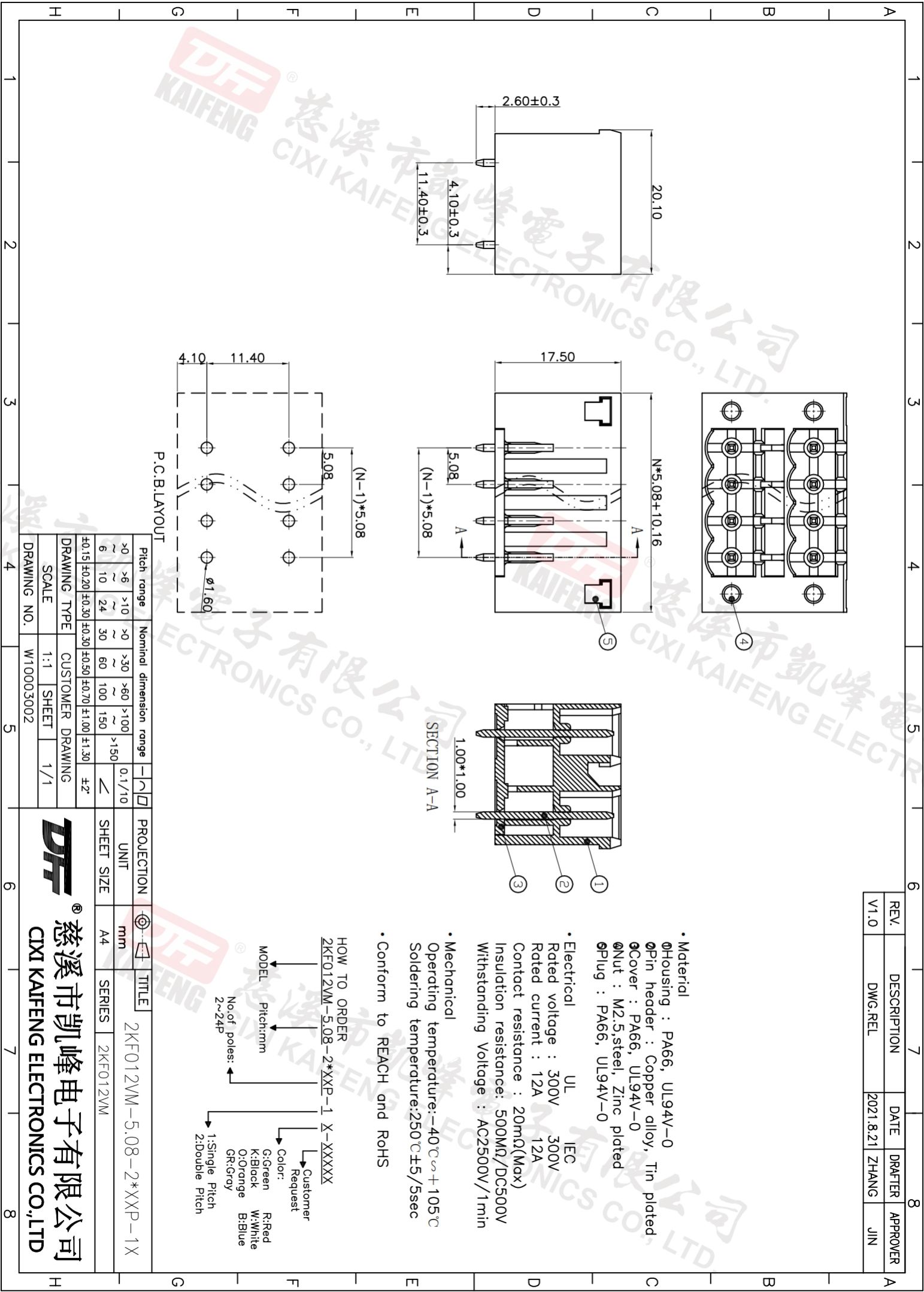
1:Single Pitch
 2:Double Pitch

• Conform to REACH and RoHS

• Mechanical
 Operating temperature: -40°C ~ +105°C
 Soldering temperature: 250°C ±5/5sec

• Electrical
 UL IEC
 Rated voltage : 300V 300V
 Rated current : 12A 12A
 Contact resistance : 20mΩ(Max)
 Insulation resistance: 500MΩ/DC500V
 Withstanding Voltage : AC2500V/1min

• Material
 ØHousing : PA66, UL94V-0
 ØPin header : Copper alloy, Tin plated
 ØCover : PA66, UL94V-0
 ØNut : M2.5,steel, Zinc plated
 ØPlug : PA66, UL94V-0



慈溪市凯峰电子有限公司
 CIXI KAIFENG ELECTRONICS CO., LTD.

DFE
 慈溪市凯峰电子有限公司
 CIXI KAIFENG ELECTRONICS CO.,LTD